

DIGITAL MICROSCOPES

The image solution for medical and laboratory application.

Motic MICROSCOPES

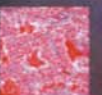
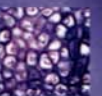
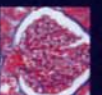
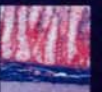
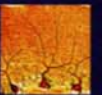
Distributed by:

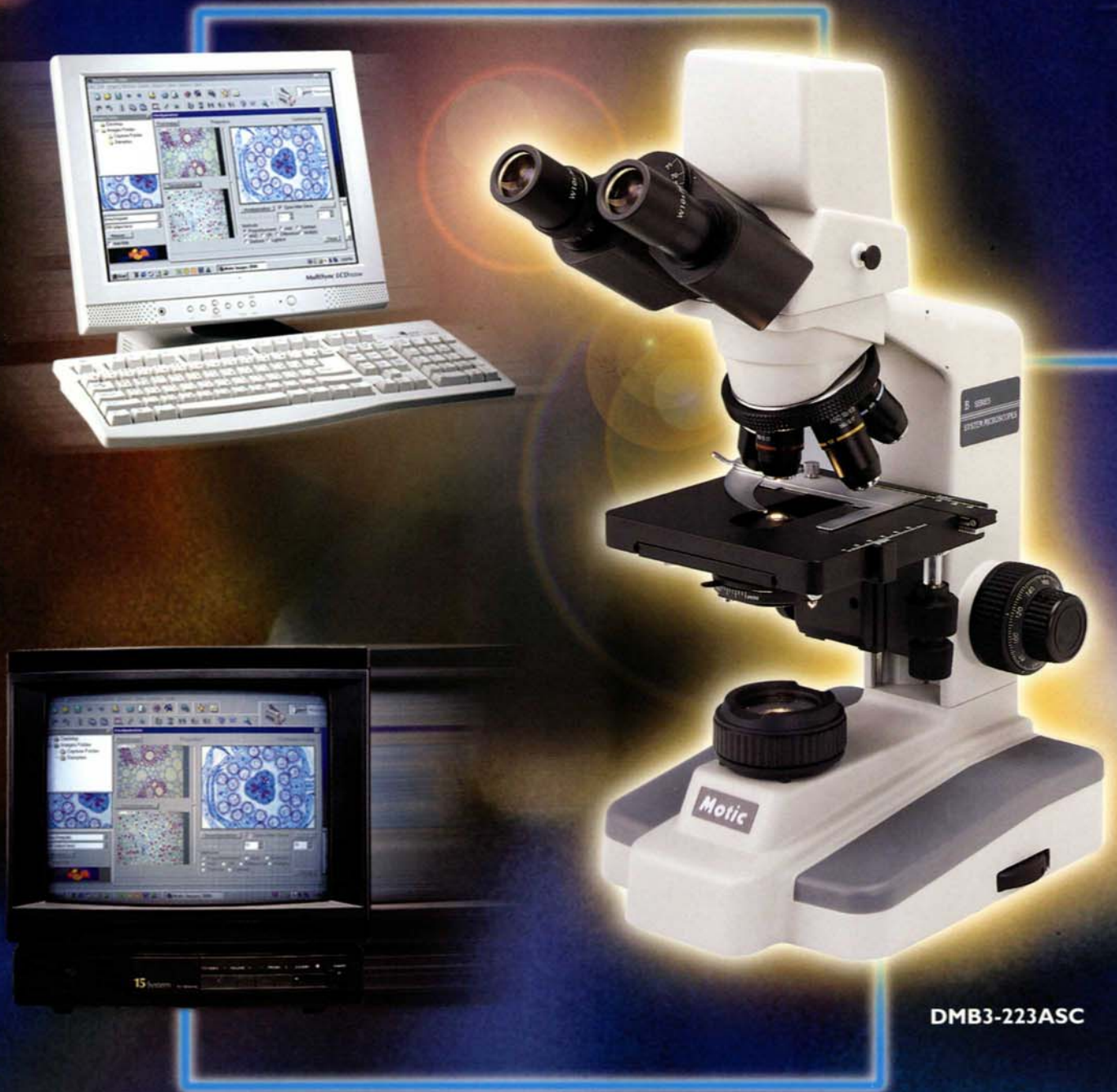
the **microscope** depot

Sales: 888-777-8835 • Email: sales@m-depot.com

Main: 209-839-2990 • Fax: 888-872-4300

<http://www.microscope-depot.com>



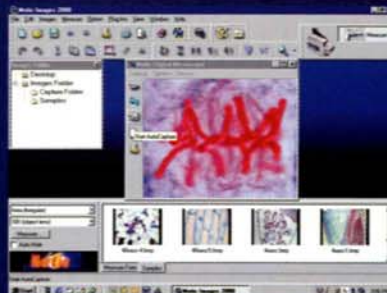


DMB3-223ASC

Motic

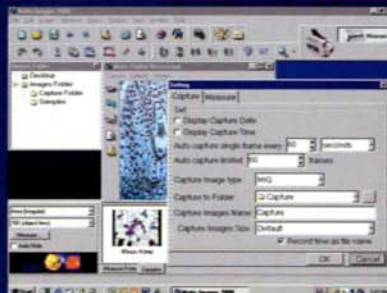
- ▶ High resolution CCD camera: analogue signal- 1/3" CCD 480 TV lines for camera 3
- ▶ Camera 3 with built in grabber to convert analogue signal to digital signal
- ▶ Motic Images 2000- User friendly software for image analyzing, comparison & calibration
- ▶ Real time image meeting through internet enables on-line discussions
- ▶ Plug and Play computer application with USB plug
- ▶ USB, S-Video & RCA Video cables provided as standard

VIDEO / SOUND RECORDING



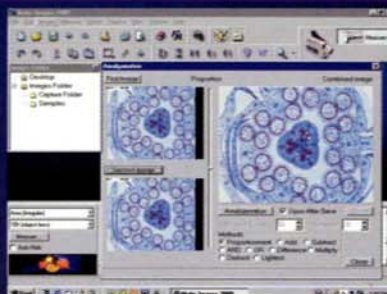
- Recording video in AVI format and sound in MIG format.

IMAGE CAPTURING AND INTERVAL SHOTS



- Capturing of image in JPG, BMP, MIG format for storage or sending through internet
- Capturing of image in programmed time intervals

IMAGE AMALGAMATION, COMPARISON



- Enables image analyzing through addition, subtraction and side by side comparison

LENGTH AND AREA MEASUREMENT FUNCTIONS



- Measurement function for length and area (circle, ellipse, rectangular or irregular size)
- Easy calibration for accurate measurement result

Minimum hardware requirement

CPU	200 MHz or above
RAM	64 MB or above
Hard disk	200 MB or above
OS	Window 98
Others	USB plug, CD Rom, sound card with speakers and microphone



Image sharing through Internet enable real time on-line discussions



DMB3-223ASC with RCA, "S" and USB output

SPECIFICATIONS OF DMB3-223

- Siedentopf binocular tube 30° inclined
- Widefield eyepiece WF10X (FN20)
- Objectives selection: Achromatic Super Contrast- ASC4X/ 10X/ 40X/ 100X OR Plan PL4X/ 10X/ 40X/ 100X
- Slot in type centerable condenser~ 1.25 abbe condenser with rack and pinion focusing, provides stability and flexibility for lab application
- Low position coaxial control mechanical stage allows quick marking on slide
- Standard blue, green, yellow and frosted filter for brightfield and phase application
- Köhler illumination system 12V/20W halogen CE for perfect illumination of specimens

digital Microscope Technical Data

	CAMERA 3	PAL	USB
Image device	1/3"Interline CCD	1/3"Interline CCD	Same
Effective pixels	(H)768x(V)494	(H)712x(V)582	(H)712x(V)582
Framed resolution	480 TV lines	480 TV lines	-
Electronic Shutter	525Lines,60Field/Sec	625Lines, 50Field/Sec	30 frames/sec
Sync System	Internal synchronization	Internal synchronization	-
Audio output	Transmission across Image 2000 direct into memory of the PC		Same
Electronic Shutter	Transmission across Image 2000 direct into memory of the PC		Same
S/N Ratio	More than 48dB(AGC Off)	More than 48dB(AGC Off)	-
Gamma Characteristic	0.45	0.45	-
White Balance	Auto white Balance (AWB)	Auto white Balance (AWB)	AWB
B.L.C	Back light compensation(Auto)	Back light compensation(Auto)	Auto
Minimum Illumination	0.1Lux(F:2.0)	0.1Lux(F:2.0)	Same
Data transfer	7.5 MB/second	7.5MB/second	Same
Color image	Take-up time below one second	Take-up time below one second	Same
Color depth	24 bit (16.7 million colors)	24 bit (16.7 million colors)	Same
Electronic Shutter	1/60-1/100,000 Sec	1/50-1/100,000 Sec	-
Power Supply/	12V±10 I	12V±10 I	Self powered
Consumption	180mA	180mA	280mA
Operating system	Windows 98	Windows 98	Same
Data format	BMP,JPG,SFC, MIG(for recording)	BMP,JPG,SFC, MIG(for recording)	Same
Immediate printout	On printer	On printer	Same
Position and size of image on monitor	Freely definable	Freely definable	Same
Menu on monitor	Pull-down menus for opening, storing, printing, print preview, regulator for brightness, color, gamma correction: icons for recording, image interpolation, switching between large and small image, image quality, automatic and manual white balance.		Same
Image data	Automatic reference number, date, time.		Same
Interactive adjustment	Color, brightness, contrast.	Same	Same
Import of stored data	Possible	Possible	Same
Print preview	Yes	Yes	Same
Environment conditions:			
Operating temperature	-10°C to 50°C, RH95% Max	-10°C to + 50°C	Same
Storate temperature	-20°C to + 60°C, RH95% Max	-20°C to + 60°C	Same
Relative humidity	40% to 95%	40% to 95%	Same



Upgradable Software Coming Soon:
 • The Motic Pro 2000 II Professional Version

Motic certified ISO 9001
Motic certified ISO 14001

Design Change : The manufacturer reserves the right to make changes in instrument design in accordance with scientific and mechanical progress, without notice and without obligation.

Electrical : All electrical parts are arranged according to CE, VDE, FCC, UL and CSA requirements.

Motic MICROSCOPES

<http://www.motic.com.cn>