

Moticam Pro

CCD Powered
Digital Microscopy



Moticam Pro

CCD POWERED
DIGITAL MICROSCOPY

FULL PACKAGE

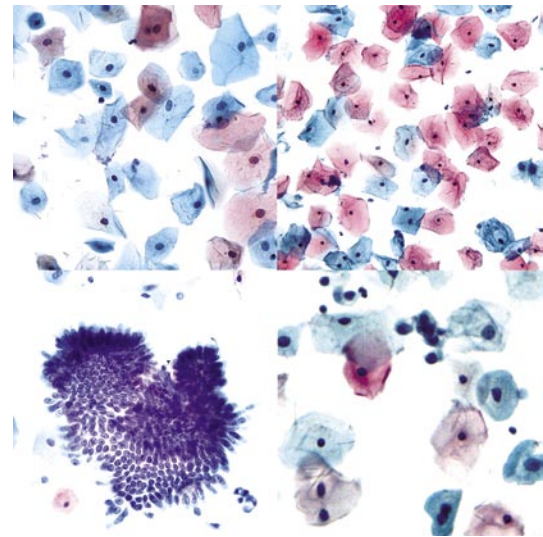
The Moticam Pro range consists of 12 feature rich options providing a large platform for high-quality digital microscopy. A Moticam Pro is a sensitive piece of equipment designed to deliver high-quality CCD based images and yet still be affordable and flexible enough for a large variety of applications. Choose from Colored / Monochrome and Standard / Peltier Cooled options. The Moticam Pro marks an extension of Motic's Camera solutions from the affordable high-resolution CMOS market to the scientific grade CCD range while still offering many choices. Whether your application calls for a Full Color 5.0MP camera for documentation or a Cooled Monochrome camera with 6.45 x 6.45 micron pixels for low light microscopy, there is a Moticam Pro available for you.

Designed exclusively in our new labs in Vancouver BC, and assembled under clean-room conditions in our Factory Headquarters, these cameras are ready to be shipped at a moment's notice.

As with all Motic Digital Solutions, the Moticam Pro is shipped with a full complement of Application Software and Tools to get you started right away.

www.moticampro.com

www.motic.com





BRING SOME COLOR TO YOUR LAB

The new Moticam Pro extended range of imaging cameras brings you plenty of performance with minimal impact on your budget.

EXPAND YOUR POSSIBILITIES TODAY

EFFICIENT COOLING AND MAXIMUM INFORMATION

This new range of CCD cameras features optional Peltier Cooling devices, which can bring down the ambient temperature up to 10 degrees Celsius. Our software will constantly show you both Ambient and Sensor Temperature.

DON'T LEAVE ANYTHING TO CHANCE

Simplified Microscopy –

The Moticam Pro is a vital component in an efficient Lab



Motic's new range of CCD cameras are designed to be used as a valuable tool in the Digital Microscopy market and as a further step of our commitment to quality and a solution to the customer's needs.

Within the simple yet efficient solid metal housing sits technology designed in our own Canadian development labs. Using Sony's ICX range of sensors exclusively, the cameras are assembled and tested to the highest standards under Clean Room conditions in our own factories.

Having invested time and resources into the development of the Moticam Pro range, Motic is now able to offer cameras ranging from High Resolution Color to High Sensitivity Cooled Monochrome Systems.

QUICK CONNECTIONS

Mount the Moticam Pro into an existing installation using the integrated tripod thread

A standard mini **USB2.0 connection** supplies data as well as power for the non-cooled cameras.

(USB cable supplied)

Use the SDK to integrate the on-board TTL trigger functions.

(Trigger cable not supplied)

LIVE READOUT

Create a Temperature Log by letting the Camera record the temperature at a customer chosen interval

The **cooled** MoticamPro feature built-in sensor arrays that allow the user to see updated Sensor and Ambient Temperature as well as the Relative Humidity inside the casing eliminating the possibility of condensation brought on by rapid cooling.

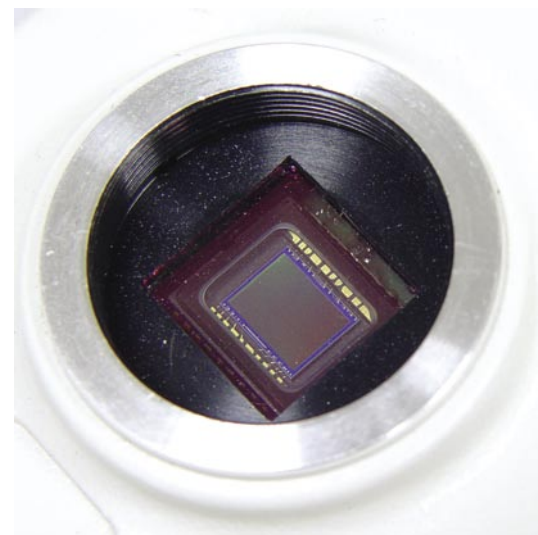
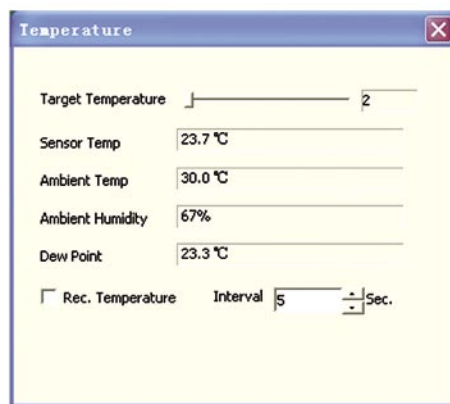
Repeatability can also be facilitated by setting a Target Temperature.

IMAGE MANAGEMENT

Manage live, still, time-lapse and video captures through the provided Motic application software. Motic Images Plus is provided right out of the box. For more feature-rich software, Motic Images Advanced is available as a free download for PC users.

The MoticamPro uses exclusively **Sony ICX sensors** providing sustained quality readouts.

Choose your camera from a variety of sensors depending on your application and your budget.

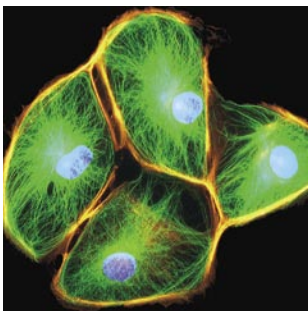


Inside the MOTICAM PRO

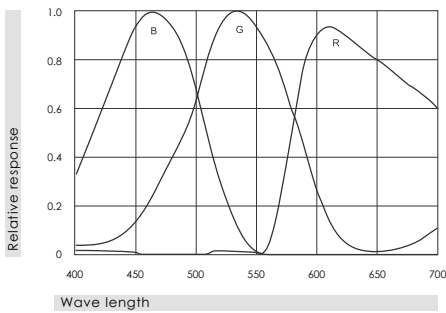
The Moticam Pro is exclusively designed and manufactured in-house. This range of cameras offers many possibilities and options but never loses Motic's 'out-of-the-box' approach.

Moticam Pro	Sony Sensor	Sensor Size	Pixel Size (Micron)	Resolution (Pixel)	Features
252A	ICX252AQ	1/1.8"	3.45 X 3.45	2080 X 1542	Color
252B	ICX252AQ				Color With Peltier Cooling
282A	ICX282AQ	2/3"	3.40 X 3.40	2580 X 1944	Color
282B	ICX282AQ				Color With Peltier Cooling
205A	ICX205AK	1/2"	4.65 X 4.65	1360 X 1024	Color
205B	ICX205AK				Color With Peltier Cooling
205C	ICX205AL				Monochrome
205D	ICX205AL				Monochrome With Peltier Cooling
285A	ICX285AQ	2/3"	6.45 X 6.45	1360 X 1024	Color
285B	ICX285AQ				Color With Peltier Cooling
285C	ICX285AL				Monochrome
285D	ICX285AL				Monochrome With Peltier Cooling

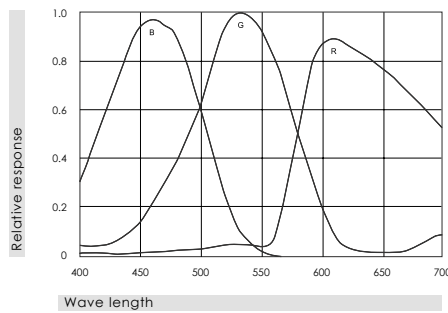
The Moticam Pro is a vital addition to fluorescence microscopy



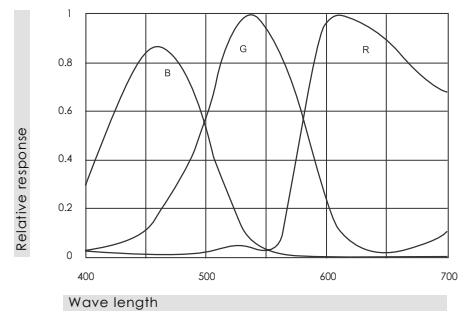
Moticam Pro 252A&B



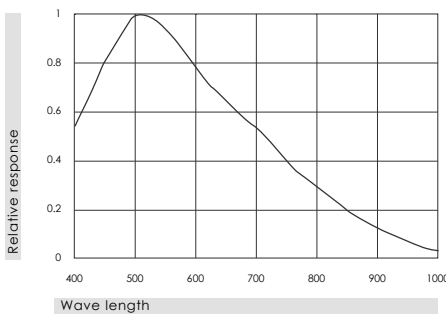
Moticam Pro 282A&B



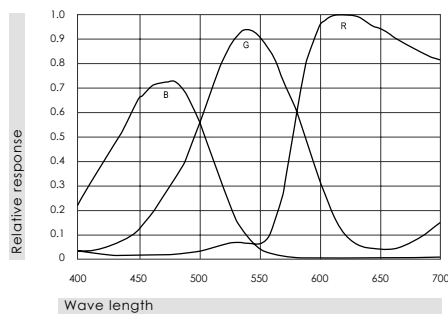
Moticam Pro 205A&B



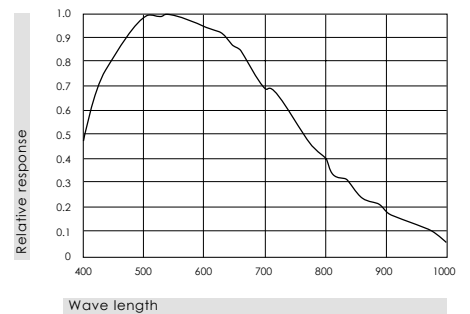
Moticam Pro 205C&D



Moticam Pro 285A&B



Moticam Pro 285C&D



Hardware

- Sony ICX CCD imaging sensor
 - Motic control, processing & imaging Boards
 - Built-in 4 frame buffer*
 - Built-in FPGA*
 - TTL trigger port*
 - Schott BG-40 filter
 - CS/C mount (C-ring provided)
 - Usb2.0 Data mini port (USB cable provided)
 - Universal power supply (for cooled cameras only)
 - Peltier cooling device (for cooled cameras only)
 - Cooling up to 10 degrees below ambient with temperature readout
- * Unlockable with SDK integration

Software

- MOTIC IMAGES PLUS application software
 - MOTIC IMAGES ADVANCED application software for windows computer only*
 - Twain Drivers
 - Motic SDK
 - Motic direct show drivers
 - Motic MI devices live imaging module with live calibration, grid, scale cross and scale bars
- * Available through free download

Recommended computer specifications

- Intel Centrino 1,6 GHz or better
- 1GB RAM or better (2GB recommed if using shared memory graphics card)
- USB2.0
- Windows XP (SP3) or better
- Macintosh OSX

www.motic.com

Distributed by:

the
microscope  **depot**

Sales: 888-777-8835 • Email: sales@m-depot.com

Main: 209-839-2990 • Fax: 888-872-4300 or 209-839-2999

<http://www.microscope-depot.com>

Motic®

More Than Microscopy

Motic Incorporation Ltd. (HONG KONG)

Rm 2907-8, Windsor House, 311 Gloucester Road, Causeway Bay, Hong Kong
Tel: 852-2837 0888 Fax: 852-2882 2792

Motic Instruments Inc. (CANADA)

130-4611 Viking Way Richmond, B.C. V6V 2K9 Canada
Tel: 1-877-977 4717 Fax: 1-604-303 9043

Motic Deutschland GmbH (GERMANY)

Christian-Kremp-Strasse 11, D-35578 Wetzlar, Germany
Tel: 49-6441-210 010 Fax: 49-6441-210 0122

Motic Spain, S.L. (SPAIN)

Polígono Industrial Les Corts, Camí del Mig, 112 08349 Cabrera de Mar, Barcelona Spain
Tel: 34-93-756 6286 Fax: 34-93-756 6287

Motic Incorporation Limited Copyright © 2002-2009. All Rights Reserved.

Design Change : The manufacturer reserves the right to make changes in instrument design in accordance with scientific and mechanical progress, without notice and without obligation.



Code No.: 1300901303101

Updated: 2009 09